

TECHNICAL REFERENCE · V 1.0

AIRE

PLEATED SCREENING SYSTEM

Specification, configuration, and ordering reference for authorized Element 13 dealers. The complete technical record of the AIRE system in a single document.

ISSUED
MAY 2026

EDITION
1.0 · DEALER

ORIGIN
EL SEGUNDO, CA

Sections.

01	System Overview	04
	What AIRE is, what it ships as, and the form factor it competes against.	
<hr/>		
02	Specifications	08
	Materials, dimensions, finishes, tolerances.	
<hr/>		
03	Configuration Logic	11
	Cartridge type, span configuration, and mount method — the three decisions that shape every order.	
<hr/>		
04	Sizing & Stack Widths	15
	Maximum dimensions and finished stack widths for ST and XL cartridges.	
<hr/>		
05	Schematics	18
	Exploded views and plan sections. Inside mount and face mount, ST and XL.	
<hr/>		
06	Field Measurement Protocol	24
	What to measure, how to measure it, and what to confirm before placing an order.	
<hr/>		
07	Bill of Materials	27
	Every part that ships with every order. The crate-opening checklist.	
<hr/>		
08	Glossary	30
	Terminology used across this document, the order form, and the shop drawings.	
<hr/>		

01

SECTION 01

System Overview.

A custom, made-to-order pleated screening system for large-format door and window openings. Manufactured to the customer's exact opening, shipped ready to install.

FORM FACTOR

Pleated, magnetic
close

MADE IN

El Segundo,
California

CLOSURE

Bipolar magnet
strip

Engineered for wide-span openings.

AIRE is a magnetic pleated screen system manufactured to the customer's exact opening. Span configuration, mount method, finish, and cartridge type are selected at order based on the opening it serves — every system shipped is a one-of-one.



FIG. 01·01 AIRE CARTRIDGE — MATTE BLACK AND WHITE FINISHES, DEPLOYED

<p>MAX SINGLE SPAN 144" × 120"</p>	<p>MAX DUAL SPAN 288" × 120"</p>	<p>BOTTOM GUIDE 5 mm</p>
--	--------------------------------------	------------------------------

What AIRE is

A custom-manufactured pleated screening system, built to the customer's exact opening dimensions, shipped ready to install. Aluminum extrusions with a Kynar powder coating, PET pleated mesh, magnetic closure. Inside-mount or face-mount, single or dual span, ST or XL cartridge — selected at order from the opening's geometry.

What AIRE is not

AIRE is not a roll-down screen. It does not compete on the same form factor as roll-down systems and should not be specified as one. It uses a single high-quality PET mesh; for projects requiring pet mesh, solar screen, or no-see-um mesh, AIRE is not the right specification.

AIRE is not the thinnest-mounting product in the category. It requires 1-13/16" at the head and 1-5/8" at the jambs. On thin-wall conditions where these depths are not available, the opening must be face-mounted; if face-mount is not viable, AIRE is not the right specification.

Form factor

The pleated form factor protects the mesh from the lateral-tension wear pattern that drives roll-down failure, and allows a 5 mm bottom guide — the lowest in the category. The screen extends and retracts horizontally, riding a steel band along the head and a chain link assembly along the sill. Closure is magnetic.

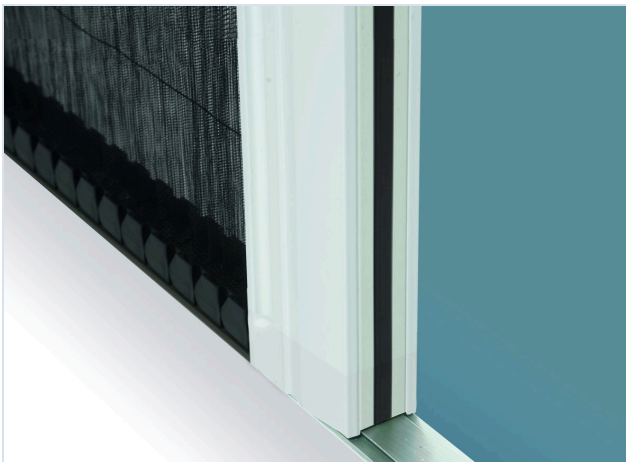


FIG. 01-02 BOTTOM GUIDE / JAMB — 5 MM PROFILE

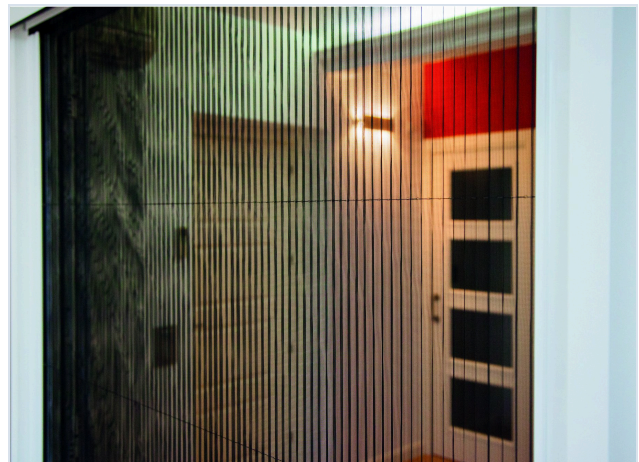


FIG. 01-03 PLEATED PET MESH — WEAVE DETAIL

One extrusion, two roles.

AIRE's structural parts use a recurring design pattern: a single extrusion is manufactured once, then performs different roles based on what is installed into it. The simplification reduces SKUs, reduces installer error, and simplifies field service.

EXTRUSION	ROLE A	ROLE B
Jamb	Base jamb — anchor plates mount onto the center ridge.	Magnet jamb — magnet strip inserts into the center ridge.
Pull bar	Base-jamb end — clips directly onto anchor plates.	Magnet-jamb end — magnet holder clips onto the same profile, magnet strip housed inside.

Exception: the ST bar is a separate, simpler extrusion used only as the stationary opposite end of ST cartridges. It clips to anchor plates and has its own profile.

Where the magnet sits

The magnet lives where the pull bar closes, and that location depends on configuration:

CONFIG	PULL-BAR TRAVEL	MAGNET LOCATION
Single / DL	Pull bar travels across the opening from base jamb to magnet jamb.	Magnet strip in the magnet jamb.
DC	Two pull bars travel inward from each jamb and meet at center.	Both pull bars; both jambs are base jambs. A center stop in the top track halts the bars at center.

FIELD RULE

If the configuration is Single or DL, identify which jamb is the magnet jamb before mounting anything. The magnet jamb is the stationary side; the pull bar closes against it. Anchor plates only mount on the base jamb.

02

SECTION 02

Specifications.

Materials, dimensions, finishes, and tolerances. These are the published specifications that govern every AIRE order.

PROFILES

Aluminum, Kynar coated

MESH

Pleated PET, UV-resistant

CLOSURE

Bipolar magnet strip

Materials & dimensions.

Maximum dimensions

Single span	144" × 120" (3658 × 3048 mm)
Dual span	288" × 120" (7315 × 3048 mm)
Single-cartridge maximum width	144" (3658 mm)
Single-cartridge maximum height	120" (3048 mm) — 10' high screen is custom

Materials

Frame profiles	Extruded aluminum, Kynar powder coating
Mesh	Pleated PET, UV-resistant
Pleat retention	Polymer parastrings
Sill ride	Plastic chain links
Pleat drive	Spring steel band
Closure	Bipolar magnet strip

Finishes

Standard	Matte Black · White
Custom	2604 architectural-grade aluminum paint, by code
Coating standard	Kynar powder

Tolerances & required depths.

Cartridge oversize

The cartridge is manufactured $\frac{1}{2}$ " (12.7 mm) wider than the raw opening to ensure full magnetic closure under all conditions. The dealer measures the raw opening and orders to that dimension; the factory adds the oversize. **Do not add the oversize to a measurement.**

Vertical tolerance

Approximately $\frac{1}{4}$ " (6 mm) total height movement is available before the screen binds. Vertical adjustment is available post-install via parallelism adjusters — see Service & Adjustments.

Opening uniformity

If the width or height varies by more than $\frac{1}{4}$ " across the three measurement points (top/middle/bottom for width; left/middle/right for height), **contact Element 13 before ordering**. The system can accommodate small variations; large ones may require a custom build or a reworked opening.

Required system depths — inside mount

SURFACE	MINIMUM DEPTH	NOTES
Jamb	1-5/8" (41 mm)	Both jambs, full height of opening.
Top track	1-13/16" (46 mm)	Full width of opening.
Sill	Flat, continuous floor	Sill adheres directly. No threshold above the floor plane.

IF DEPTH IS INSUFFICIENT

Where the opening does not meet both inside-mount minimums, AIRE must be face-mounted on a flat wall surface around the opening. See Section 03 for the face-mount selection logic and Section 06 for the field protocol.

03

SECTION 03

Configuration logic.

Three independent decisions determine the system shipped: cartridge type, span configuration, and mount method. Each is governed by the geometry of the opening and the conditions surrounding it.

DECISION 1

Cartridge type — ST or XL

DECISION 2

Span — Single, DL, or DC

DECISION 3

Mount — Inside, 3-side, 4-side

Cartridge type.

Two cartridges, one underlying pattern. The cartridge type is selected at manufacturing based on the proportion of the opening — height-dominant openings receive ST, width-dominant openings receive XL. The dealer does not specify the type; the factory selects from the dimensions provided.

ST · SINGLE TALL

For height-dominant openings.

Used when the opening is taller than it is wide, by a margin sufficient to satisfy the rule below. The simpler cartridge — a single pull bar at the magnet end and a stationary ST bar at the base end. Tension is adjusted via a string tension element inside the ST bar.

SIZING RULE $\text{Width} < (\text{Height} - 5")$

XL · EXTENDED LATERAL

For width-dominant openings.

Used when the opening is wider than tall, up to a 2:1 ratio less 16 inches. Two pull bars — base-end and magnet-end — with the parallelism adjuster in the base-end pull bar and the string tensioner behind the magnet holder on the opposite end.

SIZING RULE $\text{Max width} = (\text{Height} \times 2) - 16"$

Worked examples

OPENING (W × H)	CALCULATION	CARTRIDGE
48" × 96"	$96 - 5 = 91 > 48 \rightarrow$ height-dominant	ST
72" × 84"	$84 - 5 = 79 > 72 \rightarrow$ height-dominant	ST
120" × 96"	$(96 \times 2) - 16 = 176 > 120 \rightarrow$ width-dominant	XL
144" × 84"	$(84 \times 2) - 16 = 152 > 144 \rightarrow$ width-dominant	XL

WHEN THE RULE LANDS AT THE BOUNDARY

If the opening sits within ½ inch of either rule's threshold, contact Element 13 before ordering. The cartridge selection is firm, but a borderline geometry may benefit from a manufacturing review.

Span configuration.

Span configuration is determined by opening width, with customer preference deciding between the two dual options. Single is the default for openings up to 144 inches; over 144 inches the system is delivered in dual configuration.

SINGLE

Single span.

One cartridge. The pull bar travels across the opening and meets a magnet strip housed in the opposing jamb.

RANGE Up to 144" wide

DL · DUAL LATERAL

Pulls from one side.

Two cartridges joined at the factory by a PVC connector. Functions as one span, pulls from one side. Used when the customer prefers a single-direction motion across a wide opening.

RANGE Over 144" · up to 288"

DC · DUAL CENTRAL

Meets at center.

Two cartridges, one on each jamb. Pull bars meet and close magnetically at the center. A center stop in the top track halts them. Both jambs are base jambs.

RANGE Over 144" · up to 288"

Stability over wide spans

For spans wider than 12 feet (3658 mm), Element 13 recommends DL or DC over a forced single span — the dual configurations are more stable in high-wind exposures. For ST cartridges, the recommendation begins at 12 feet; for XL cartridges, at 10 feet. The recommendation is operational, not absolute — single spans can be ordered at the upper width but the dual configurations should be the default consideration.

Where the magnet sits, by configuration

CONFIGURATION	BASE JAMB	MAGNET JAMB	CENTER STOP
Single	One side	Opposite side	—
DL	Outer side	Other outer side	—
DC	Both jambs	None — pull bars meet at center	In the top track

Mount method.

Three mount methods cover the conditions encountered in the field. Inside mount is the default. 3-sided face mount is used when the inside of the opening is unsuitable. 4-sided face mount is used when no floor exists for the sill.

METHOD	WHEN IT APPLIES
Inside	Default. The opening provides 1-5/8" jamb depth, 1-13/16" head depth, and a flat continuous sill or floor for the sill to adhere to. All four interior surfaces are flat, solid, and continuous.
3-sided face mount	The inside of the opening is too shallow or unsuitable for inside mount, and a flat floor exists at the bottom of the opening for the sill to adhere to. The face-mount frame covers the top and two jambs. The sill adheres directly to the floor.
4-sided face mount	No floor exists for the sill — typical for window openings or door openings without a threshold. Adds a bottom extrusion that creates a surface for the sill to adhere to. The face-mount frame surrounds all four sides of the opening.

Face-mount stack consequences

Face mount adds 10 mm (~3/8") to the finished stack widths in Section 04. The face-mount extrusion is 1-3/16" (30 mm) wide per side. To hide the stack behind the face-mount frame face, the adjusted stack must fit within that 1-3/16" — for most ST orders this is the case; for XL orders the stack will protrude into the opening on the base-jamb side. **Confirm the stack-hiding decision with the customer before ordering.**

Decision tree

Opening provides $\geq 1\text{-}5/8$ " jamb & $\geq 1\text{-}13/16$ " head, with continuous sill?	Inside mount
Opening fails one of the inside-mount minimums, but a flat floor exists?	3-sided face mount
No floor available for the sill — typical window opening?	4-sided face mount
Wall around the opening is uneven or insufficient for the face-mount frame?	Contact Element 13

04

SECTION 04

Sizing & stack widths.

Maximum dimensions and finished stack widths for both cartridges.

The stack is the bundled mesh, parastrings, band, and chain links sitting against the base jamb when the screen is fully retracted.

ST MAX

9'-7" × 10' (single)

XL MAX

12' × 10' (single)

COUPLED MAX

288" (DL or DC)

ST cartridge — sizing.

Single Tall. For height-dominant openings. Maximum width is governed by the formula **Width = Height – 5"**; over 12 feet wide, dual lateral or dual central configurations are recommended for wind stability.

MAXIMUM DIMENSIONS

Maximum height (single)	10' (3048 mm)
Maximum width (single)	9'-7" (2921 mm)
Maximum coupled width	19'-2" (5842 mm)
Sizing rule	Width = Height – 5"

FINISHED STACK — BY SCREEN WIDTH

SCREEN WIDTH	STACK WIDTH
Up to 4' (1219 mm)	4-3/8" (111 mm)
5' (1524 mm)	4-5/8" (118 mm)
6' (1829 mm)	4-7/8" (124 mm)
7' (2134 mm)	5-1/8" (130 mm)
8' (2438 mm)	5-3/8" (137 mm)
9' (2743 mm)	5-5/8" (143 mm)

Add ½" (12.7 mm) for screens taller than 9 ft using PE mesh. Face mount adds an additional 10 mm (~3/8") to all stack widths.



FIG. 04-01 ST CARTRIDGE — WHITE FINISH

ST SIZE MATRIX

HEIGHT	WIDTH RANGE
7' (2134 mm)	3'–6'
8' (2438 mm)	3'–7'
9' (2743 mm)	3'–8'
10' (3048 mm)	3'–9'-7"

XL cartridge — sizing.

Extended Lateral. For width-dominant openings. Maximum width is governed by the formula **Width = (Height × 2) – 16"**; over 10 feet wide, dual lateral or dual central configurations are recommended for wind stability.

MAXIMUM DIMENSIONS

Maximum height (single)	10' (3048 mm) — custom
Maximum width (single)	12' (3658 mm)
Maximum coupled width	288" (7315 mm)
Sizing rule	Max W = (H × 2) – 16"

FINISHED STACK — BY SCREEN WIDTH

SCREEN WIDTH	STACK WIDTH
Up to 7' (2134 mm)	5-1/2" (140 mm)
8' (2438 mm)	6" (153 mm)
10' (3048 mm)	7" (178 mm)
12' (3658 mm)	8" (203 mm)
14' (4267 mm)	9" (229 mm)
16' (4877 mm)	10" (254 mm)

Add 1/2" (12.7 mm) for screens taller than 9 ft using PE mesh. Face mount adds an additional 10 mm (~3/8") to all stack widths. 10' high screen is custom order.

XL SIZE MATRIX

HEIGHT	WIDTH RANGE
7' (2134 mm)	7'–12'
8' (2438 mm)	7'–12'
9' (2743 mm)	7'–12'
10' (3048 mm)	7'–12' · custom

COUPLED CONFIGURATIONS

For openings beyond 12 ft single-span, ship in DL or DC. The two cartridges are matched at manufacturing — order width is the total opening; the factory splits the spans evenly unless otherwise specified.

Coupled width range	12'-1" – 24' (288")
Coupled max each side	9'-7" (2921 mm)
Maximum total coupled	19'-2" for ST · 24' for XL

05

SECTION 05

Schematics.

Exploded views and plan sections for ST and XL cartridges, in both inside-mount and face-mount applications. Use these alongside the shop drawings issued with each order — the shop drawing for a given order takes precedence on dimensions.

ST

Inside · Face mount · Plan

XL

Inside · Plan

SOURCE

Element 13 engineering

ST · Inside mount.

Single Tall cartridge mounted within the opening. Base jamb (with anchor plates) on the left; magnet jamb on the right.

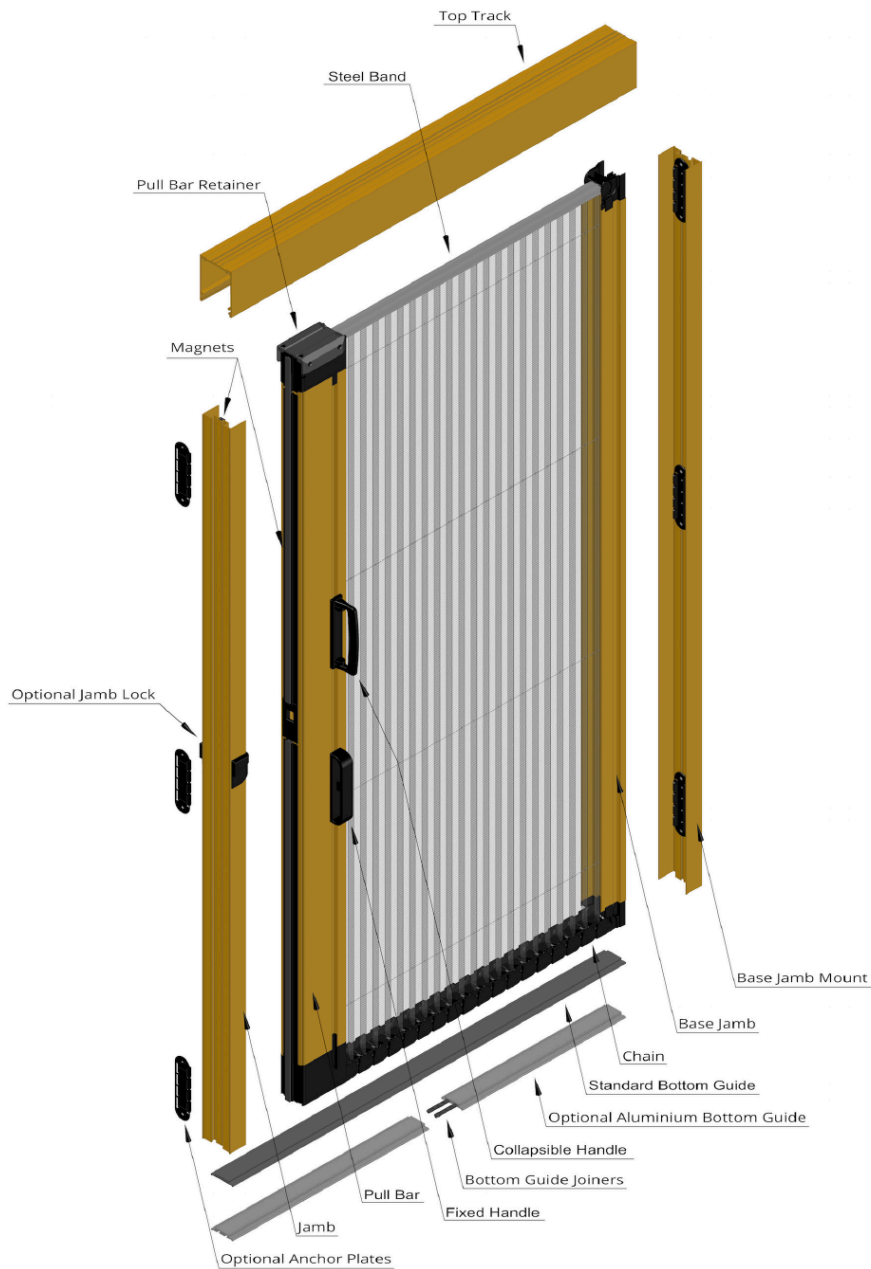
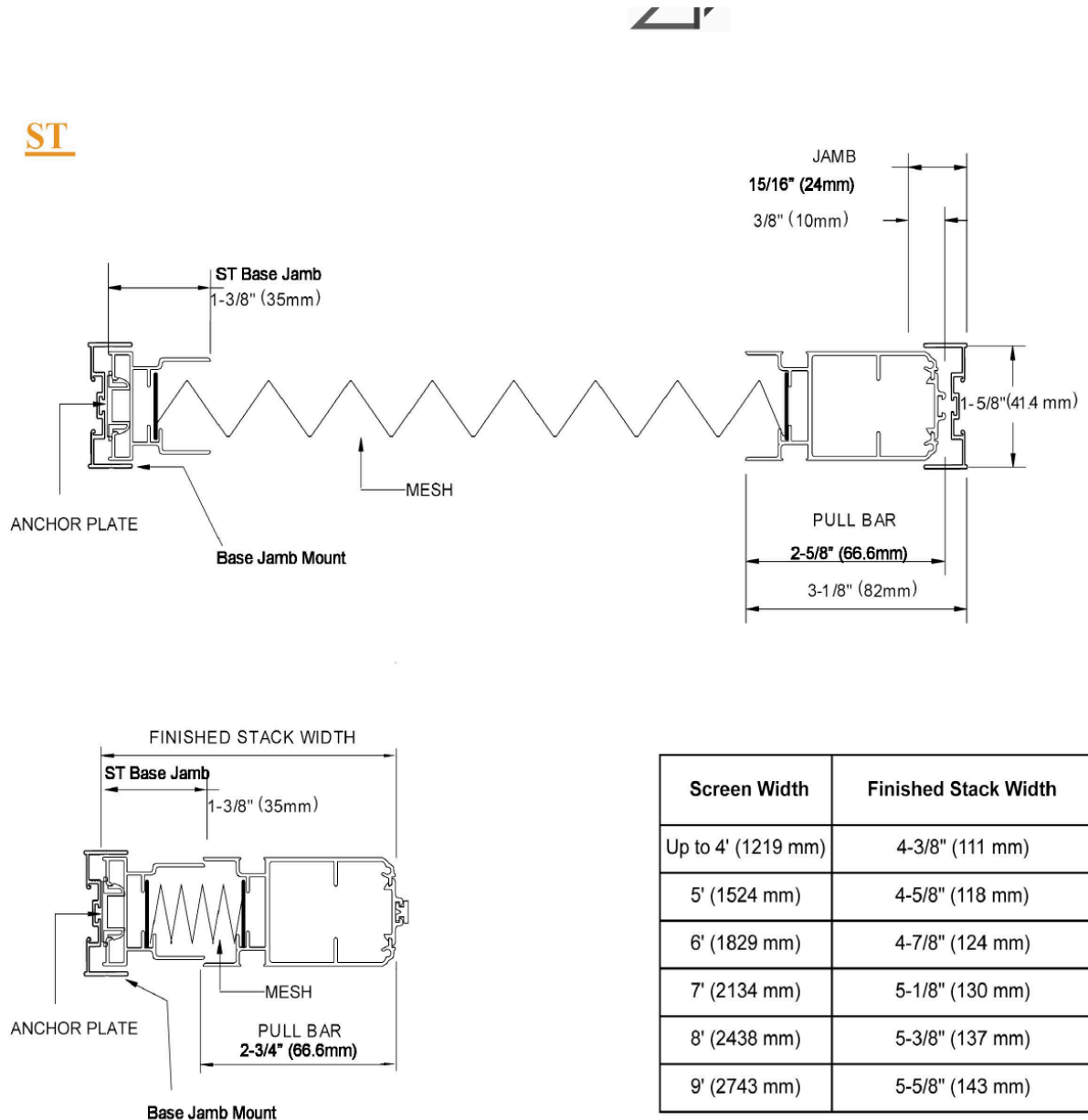


FIG. 05-01 ST CARTRIDGE — INSIDE MOUNT, EXPLODED

ST · Plan view & finished stack.

Plan section showing the ST base jamb, mesh, and pull bar, with finished stack widths by screen width.



*Any screen that is taller than 9' (2743mm) and uses PE mesh, will add an additional 1/2" (12.7mm) of width to the above measurements.

FIG. 05-02 ST CARTRIDGE — PLAN VIEW, FINISHED STACK WIDTHS

ST · Face mount.

Face-mount frame surrounds the opening on three sides — or four for window applications. Frame projects 2-1/8" from the wall.

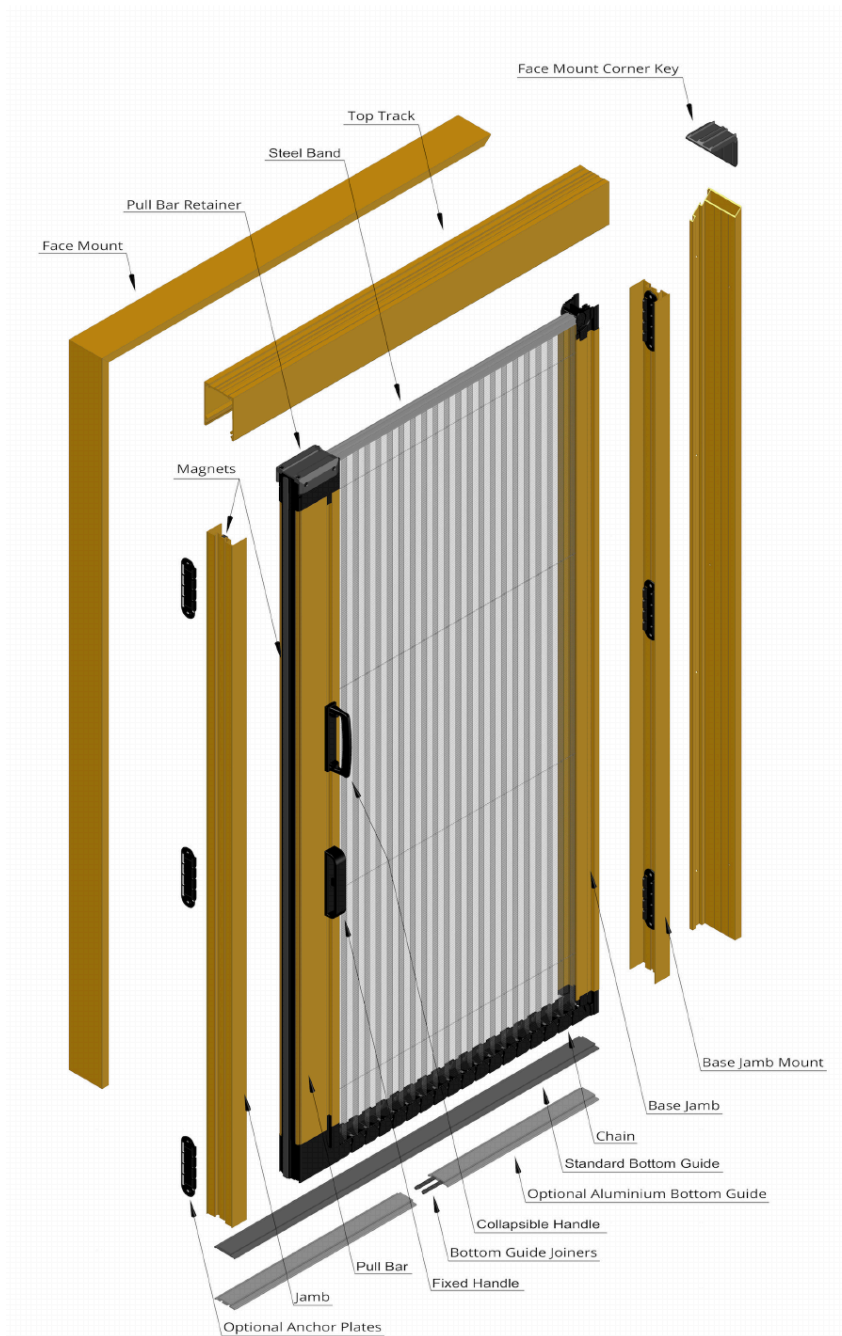


FIG. 05-03 ST CARTRIDGE — FACE MOUNT, EXPLODED

XL · Inside mount.

Extended Lateral cartridge with two pull bars — base-end and magnet-end. Band retainer in the top track is included on spans over 8 feet.

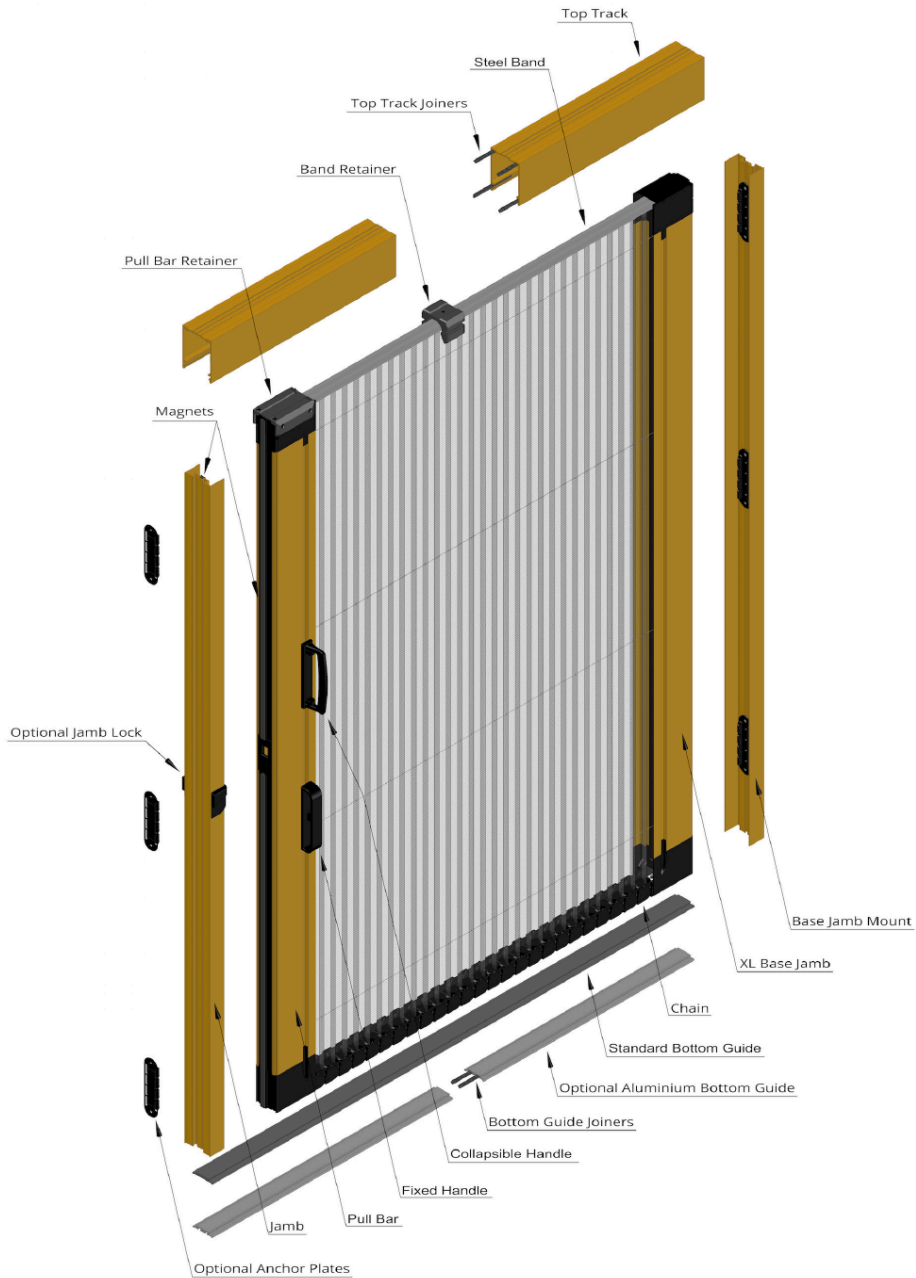
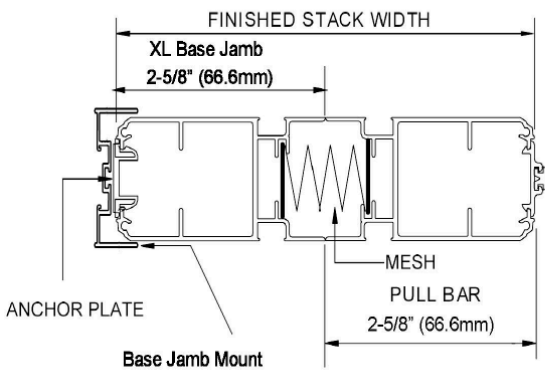
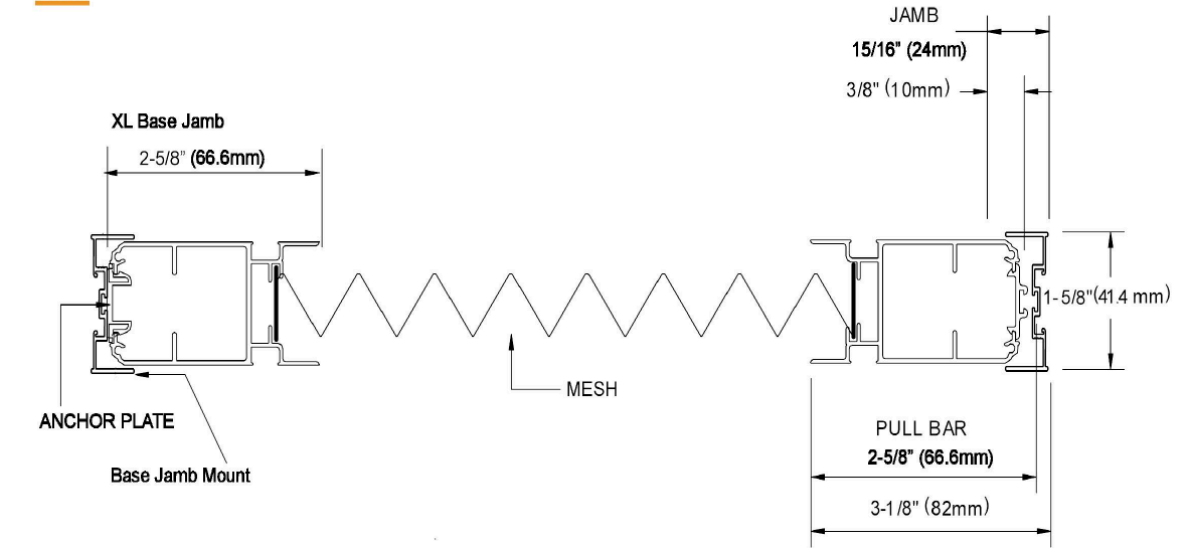


FIG. 05-04 XL CARTRIDGE — INSIDE MOUNT, EXPLODED

XL · Plan view & finished stack.

Plan section showing the XL base jamb, mesh, and pull bar. The XL base jamb is wider than ST to accommodate the dual pull-bar profile.

XL



Screen Width	Finished Stack Width
Up to 7' (2134 mm)	5-1/2" (140mm)
8' (2438 mm)	6" (153 mm)
10' (3048 mm)	7" (178 mm)
12' (3658 mm)	8" (203 mm)
14' (4267 mm)	9" (229 mm)
16' (4877 mm)	10" (254 mm)

*Any screen that is taller then 9' (2743mm) and uses PE mesh, will add an additional 1/2" (12.7mm) of width to the above measurments.

FIG. 05-05 XL CARTRIDGE — PLAN VIEW, FINISHED STACK WIDTHS

06

SECTION 06

Field measurement protocol.

What to measure, how to measure it, and what to confirm before placing an order. Run the full protocol on every opening — the cost of an extra fifteen minutes on site is much smaller than the cost of a re-order.

USE

One sheet per opening

COMPANION

AIRE Measurement Checklist

STANDARD

Raw opening · No tolerances added

The on-site sequence.

A complete site visit follows the sequence below. Where this protocol is summarized, the full standalone **AIRE Measurement Checklist** is the form of record — one sheet per opening, signed off by the measuring installer.

01 Confirm mount type.

Inspect the opening for jamb depth, head depth, and a continuous sill. Determine inside, 3-sided face mount, or 4-sided face mount before any measurement is taken — the mount method governs which sections of the checklist apply.

02 Determine span configuration.

Single for openings up to 144 inches wide. Over 144 inches, decide DL or DC with the customer. Confirm the base-jamb side (left or right) for Single and DL; both jambs are base jambs on DC.

03 Measure the raw opening.

Width at top, middle, and bottom. Height at left, middle, and right. Record all six measurements, even when uniform — the record is the audit trail. **Do not add tolerances** — the factory adds the ½" cartridge oversize.

04 Verify uniformity.

If width or height varies by more than ¼" across the three measurement points, contact Element 13 before ordering. Most openings are within tolerance; the ones that are not need a manufacturing review.

05 Confirm stack clearance.

The pleat stack sits against the base jamb when retracted. Confirm clear space on the chosen base-jamb side for the stack and any nearby trim, hardware, or door swing. Use the stack-width tables in Section 04 to verify.

06 Run the inside-mount or face-mount checks.

For inside mount: confirm 1-5/8" jamb depth and 1-13/16" head depth at every measurement point, plus continuous flat surfaces. For face mount: confirm flat wall around the opening with adequate overlap, and record the stack-hiding decision.

07 Sign off and submit.

Photograph the opening with measurements visible. Sign the checklist. Submit with the order — the order form references the checklist sheet by ID.

Rules of thumb.

Field judgment that does not show up on a drawing. These are the patterns that separate first-time-right installers from re-order installers.

Always measure to the substrate

Measure to the structural surface that the extrusion will mount to, not to a finish surface that may be removed or replaced. If a baseboard, threshold, or weatherstrip is removable, measure assuming it will be removed for the install.

Treat the floor like a fourth jamb

The sill adheres directly to the floor on inside mount and 3-sided face mount. A floor that is dusty, painted, sloped, or interrupted by a transition strip is not a viable mounting surface. Confirm continuity along the full width of the opening.

Photograph the inside corners

The most common cause of inside-mount failure is an interior corner that is out of plane — a jamb that pinches or kicks out at the head or sill. A photograph at each corner with a square or level visible documents the condition for the factory and the dealer record.

Know what's behind the wall

For face mount, mounting screws penetrate the wall. Confirm framing, headers, or solid blocking on every side of the frame footprint. Hollow drywall with no blocking is not an acceptable face-mount substrate.

Confirm the door swing

The face-mount frame projects 2-1/8" from the wall. Doors that swing toward the screen — primary doors, French doors, dual-pivot doors — must clear the frame in the open position. Measure the swing arc, not the door width.

07

SECTION 07

Bill of materials.

What ships with every AIRE order. Use this as the crate-opening checklist — confirm contents against the order before scheduling the install. Missing parts are easier to resolve on the day of delivery than on the day of install.

ALWAYS INCLUDED

Cartridge · Track · Sill
· Jambs

HARDWARE BAG

Anchors · Screws ·
Handle

CONFIGURATION- SPECIFIC

Center stop · Corner
keys

What ships with every order.

Every AIRE order ships complete: a custom-built cartridge, the track and sill cut to opening width, two jambs, and a hardware bag. Quantities adjust for DC and face-mount configurations.

Always included

01	Screen cartridge ST, XL, DL, or DC — custom built to opening	Custom	1
02	Top track Cut to opening width	Aluminum, finish-matched	1
03	Sill Cut to opening width	Aluminum, finish-matched	1
04	Jambs One magnet jamb + one base jamb on Single / DL · two base jambs on DC	Aluminum, finish-matched	2
05	Hardware bag See breakdown opposite	Per configuration	1

Hardware bag — contents

ITEM	SPECIFICATION	QTY (STD)	QTY (DC)
Anchor plates	—	4	8
Anchor-plate screws	#8 × 3/8" truss-head Phillips, zinc	8	16
Mounting screws	3.5 × 30 mm pan-head Phillips, finish-matched	16	16
Handle	Collapsible, finish-matched	1	1
DC center stop	—	—	1

Configuration-specific contents.

Additional items shipped on face-mount applications, plus the factory-installed components inside the cartridge.

Face mount — additional items

ITEM	SPECIFICATION	3-SIDED	4-SIDED
Self-drilling screws	#6 × 1/2" pan-head Phillips, zinc	18	24
Face-mount corner keys	—	2	4
Bottom face-mount extrusion	Aluminum, finish-matched	—	1

Factory-installed in the cartridge

Pull bar retainer	Top of pull bar — captures it in the top track
Band retainer	In top track — spans over 8 ft only
String tension element	Inside ST bar (ST) or behind magnet holder (XL)
Parallelism adjuster	In base-end pull bar (XL only)

Crate-opening checklist

Confirm contents against the order before scheduling install.

Cartridge present and undamaged	Visual inspection of the pleat stack
Top track and sill cut to ordered width	Tape-measure verify
Jamb count, type, and finish match order	2 for Single/DL · 2 for DC (both base)
Hardware bag complete, face-mount items where applicable	Per the tables on the previous page

08

SECTION 08

Glossary.

Terminology used across this document, the order form, the measurement checklist, and the shop drawings. The same term means the same thing on every Element 13 surface.

USE

Reference during measurement
& ordering

SOURCE

Element 13
engineering

STANDARD

Single source
of truth

Terminology.

Anchor plates	Small plates that fix the base-jamb end of the cartridge to the jamb. The pull-bar profile or ST bar clips onto them.
Base jamb	The jamb that holds the cartridge stack when retracted. Anchor plates mount onto its center ridge.
Cartridge	The full pleated screen assembly: top track, sill, jambs, pull bar(s), mesh, and steel band. Manufactured to opening size.
Chain links	Plastic links along the bottom of the mesh that ride within the sill and provide structural support.
Face mount	Cartridge frame mounts to the face of the surrounding wall. Used when the inside of the opening is too shallow or unsuitable. Frame is 1-3/16" wide per side and adds 10 mm to the stack.
3-sided / 4-sided	Face-mount variants. 3-sided = top + 2 jambs, sill adheres to the floor. 4-sided = adds a bottom extrusion when no floor exists for the sill (typical for windows).
Inside mount	Cartridge mounts within the existing opening. Requires jamb depth 1-5/8" min and top track depth 1-13/16" min.
Jamb	Vertical extrusion on each side of the opening. Houses the magnet strip on one side (magnet jamb) and anchor plates on the other (base jamb).
Magnet jamb	The jamb the pull bar closes against. Houses the magnet strip in its center ridge. (DC has no magnet jamb — pull bars meet at center.)

Terminology.

Parastrings	Polymer cords threaded through the mesh that keep the pleats aligned and tensioned.
Pull bar	The vertical bar the user grabs and pulls across the opening. Wheel rides the sill; retainer at the top captures it in the top track.
Sill	Horizontal extrusion at the bottom of the opening. The chain links ride within it. On 3-sided face mount and inside mount, the sill adheres directly to the floor.
Span	How the cartridge covers the opening. Single = one cartridge. DL = two cartridges joined, pulls from one side. DC = two cartridges, pull bars meet at center.
Stack	The pleated mesh, parastrings, band, and chain links bundled against the base jamb when the screen is retracted. Stack width grows with screen width.
Steel band	Spring-steel band running along the top of the mesh. Drives the pleat motion as the screen extends and retracts.
ST bar	The stationary opposite end of an ST cartridge. Clips to anchor plates on the base jamb.
ST cartridge	Single Tall. Used when the opening is height-dominant: $Width < (Height - 5")$.
Top track	Horizontal extrusion at the head of the opening. Houses the steel band; pull bar retainer captures the top of the pull bar.
XL cartridge	Extended Lateral. Used when the opening is width-dominant. $Max\ width = (Height \times 2) - 16"$.

END OF DOCUMENT

Manufactured in El Segundo,
California.

Element 13, LLC
210 Penn Street, El Segundo, CA 90245
424.291.2007
customerservice@element13designs.com